

## FL – Power Van

---



\* Picture for illustration purposes only

### **Van Features**

- 53' air ride suspension trailer. Plate van with aluminum roof.
- Side man door with steps and hand railing plus rear van doors. Steps & hand railings made of Aluminum
- 6' x 9' control tower with hydraulic raise and lower. Insulated walls and roof, Air Conditioning and heater, Captains chair and operator's console.
- Rear operator's platform for tower with fold up handrails and emergency escape ladder. Powder coated
- Partitioned inside with fire rated wall to separate generator from switch gear and access door.
- Galvanized air intake in the floor of gen room
- New 7,500 gross liter double wall under slung fuel tank.
- 110 volt electric fuel pump with nozzle and hose for re-fueling mobile equipment. c/w outside access door.
- Inside roof is insulated then covered with 3/8" marine grade plywood then painted white.
- Lockable plug box on side of van with plug plate and 18 blank covers (6 of each 30,60 & 100amp)
- Work bench c/w vise. Lockable storage locker below bench to store the 4 exterior work lights.

### **MCC Breakdown:**

- 1x 1200A Main Breaker
- 1x Ground Fault Indicator
- 1x 45KVA 3 Phase 480-120/208V XFMR
- 1x 150A 42Circuit 120/208V Panelboard

- 10x Size 1 FVNR Motor Starters
- 8x Size 2 FVNR Motor Starters
- 5x Size 3 FVNR Motor Starters
- 1x Size 4 FVNR Contactor (Super Stacker power feed, no overloads required)
- 1x Size 5 FVNR Motor Starter
- 1x S811 420Amp(Standard duty) rated Soft Start
- 1x S811 650Amp(Standard duty) rated Soft Start
- 1x DG1 46A 460VAC VFD
- 1x DG1 72A 460VAC VFD

#### **Van Features:**

- -Exit/Emergency Lighting with mechanical timers located at main egress door, generator room access door and upper tower area.
- -4x LED Flood lights on tower.
- -15A 125VAC Shore power inlet for powering interior lights and battery charger without running the main generator.
- -12VDC Lighting w/motion sensor in exterior plug box.
- -Start-up warning system.
- -Plug box door interlocked with emergency stop wiring. Stops the door from being opened while the system is energized.

#### **Push Button Console:**

- 29x Start/Stop Buttons
- 2x VFD Potentiometers
- 1x Horn Button
- 1x Grizzly Up/Down Selector Switch
- 1x Emergency stop
- 1x Key Interlock Switch
- 5X Digital Meters



\* Tower lowered for transport



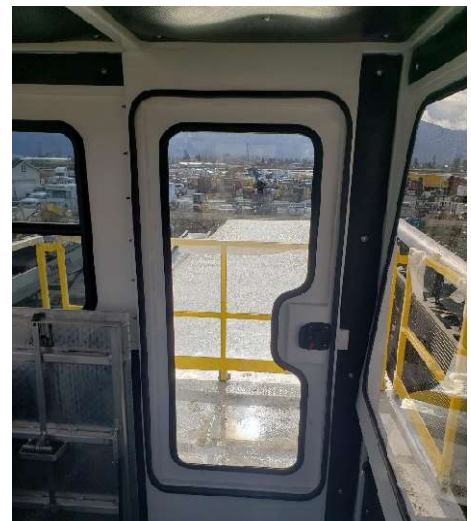
Switch Gear room with work bench & access to tower



Genset room with floor vent



Control room



Fuel Station under work bench with outside access door





## Generator Specs

- Used 800 kW Genset with 6100 hrs

