

FL – Power Van



* Picture for illustration purposes only

- 53' air ride suspension trailer. Plate van with aluminum roof.
- Side man door with steps and hand railing plus rear van doors. Steps & hand railings made of Aluminum
- 6' x 9' control tower with hydraulic raise and lower. Insulated walls and roof, Air Conditioning and heater, Captains chair and operator's console.
- Rear operator's platform for tower with fold up handrails and emergency escape ladder. Powder coated
- Partitioned inside with fire rated wall to separate generator from switch gear and access door.
- Galvanized air intake in the floor of gen room
- New 7,500 gross liter double wall under slung fuel tank.
- 110 volt electric fuel pump with nozzle and hose for re-fueling mobile equipment. c/w outside access door.
- Inside roof is insulated then covered with 3/8" marine grade plywood then painted white.
- Lockable plug box on side of van with plug plate and 18 blank covers (6 of each 30,60 & 100amp)
- Work bench c/w vise. Lockable storage locker below bench to store the 4 exterior work lights.



* Tower lowered for transport



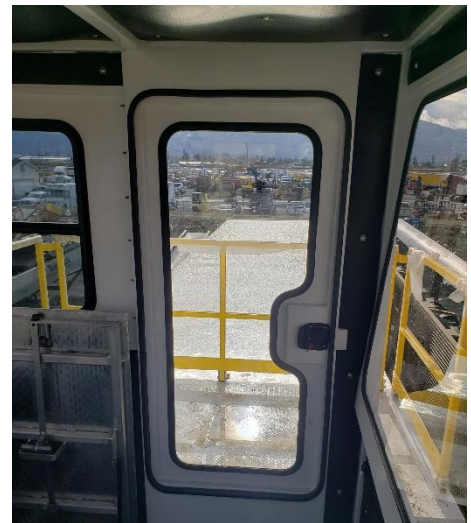
Switch Gear room with work bench & access to tower



Genset room with floor vent



Control room



Fuel Station under work bench with outside access door

